

## Série VP12 G 1/2" Muscular

Válvulas direcionais 3/2, 5/2 e 5/3 com atuações musculares por alavancas e pedais.

**PRESSÃO MÁXIMA:** 0 à 10,5kgf/cm<sup>2</sup>

**TEMPERATURA:** -10°C a +80°C

**FLUÍDO:** Ar filtrado e lubrificado

**LUBRIFICAÇÃO:** ISO8 ou ISO10

**VAZÃO:** 4750 l/min

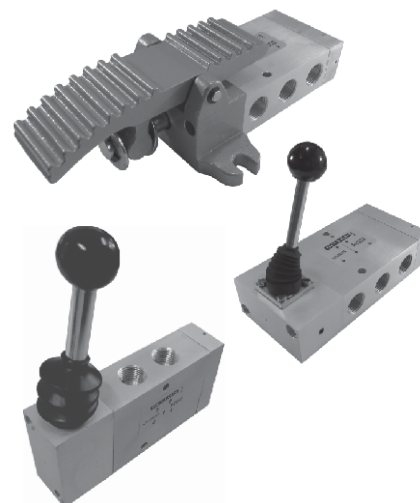
**MATERIAL:** Alumínio, Latão, Aço Inox, Zamac e Buna-N

**TIPO CONSTRUTIVO:** Spool (universal)

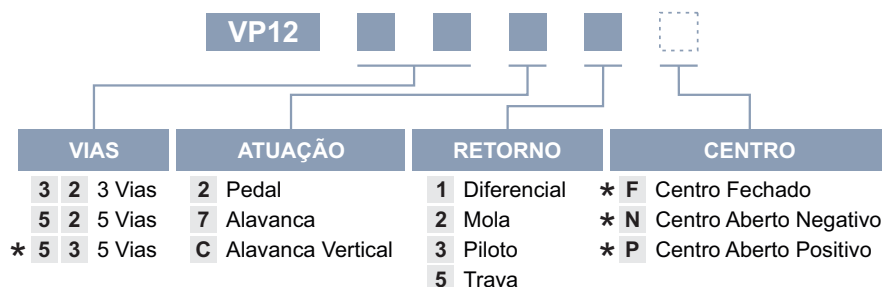
**CONEXÕES:** Vias G 1/2" / Piloto G 1/8"

**MONTAGEM:** Modelo pedal conta com orelhas laterais. Todas contém no corpo da válvula furos laterais para fixação.  
Podem ser montadas em qualquer posição.

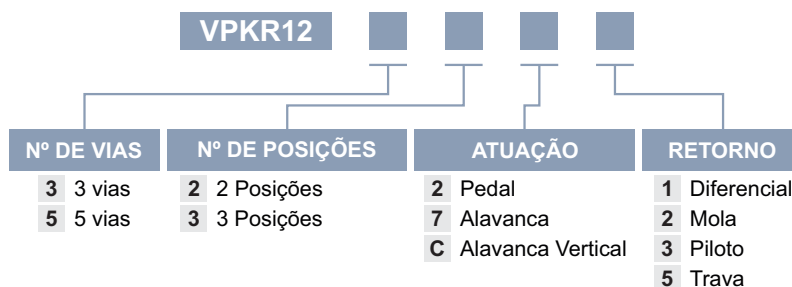
**SIMBOLOGIA:** Vide dimensional.



### CODIFICAÇÃO



### KIT REPARO



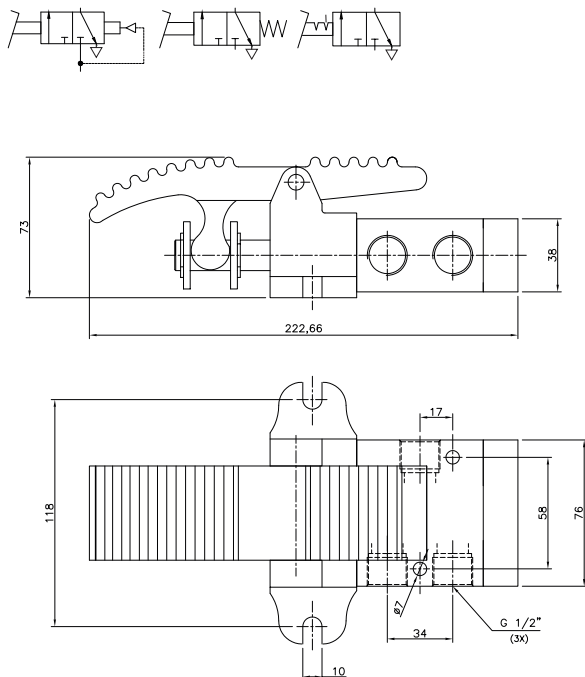
#### NOTAS:

\* Somente para válvulas 5/3 vias.

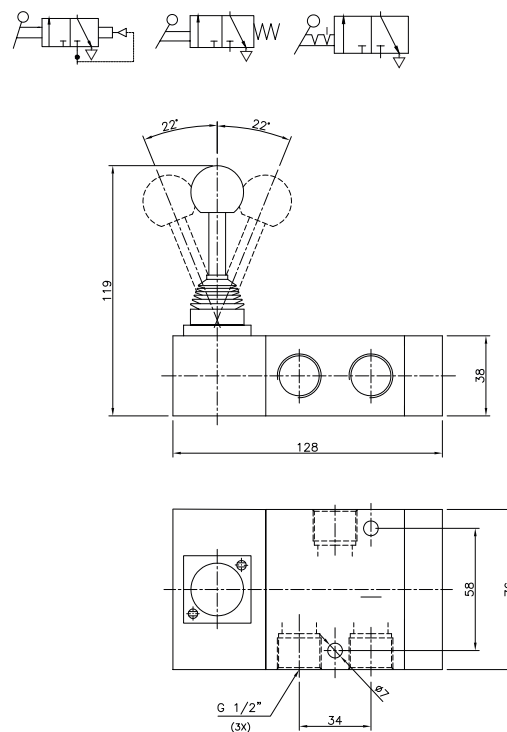
## Série VP12 G 1/2" Muscular

### DIMENSIONAL

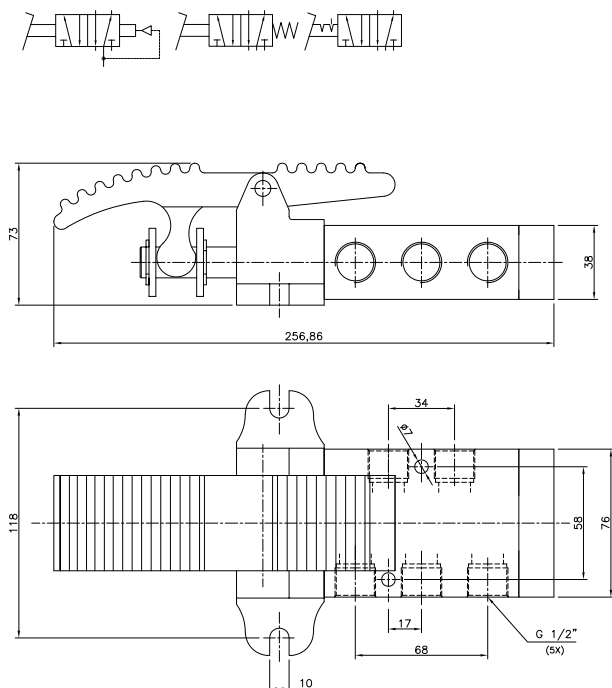
#### VP123221/VP123222/VP123225



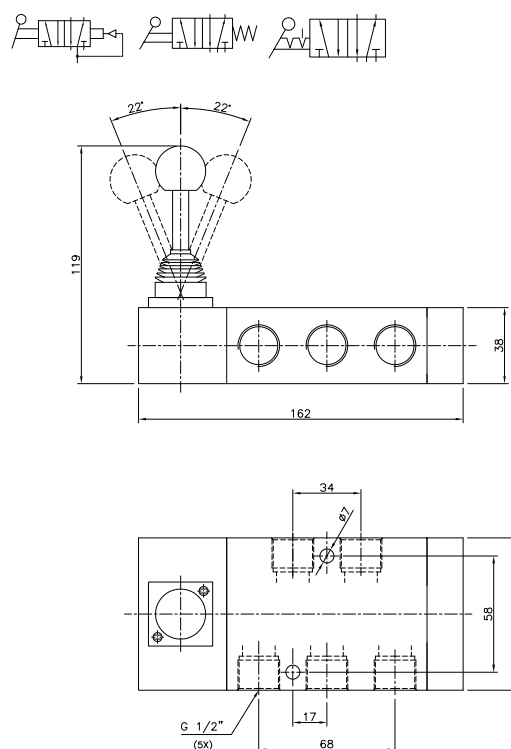
#### VP123271/VP123272/VP123275



#### VP125221/VP125222/VP125225

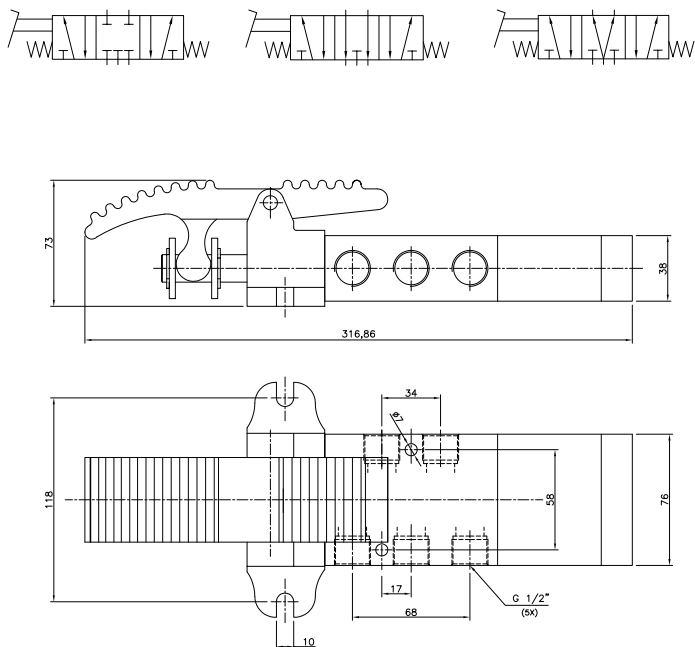
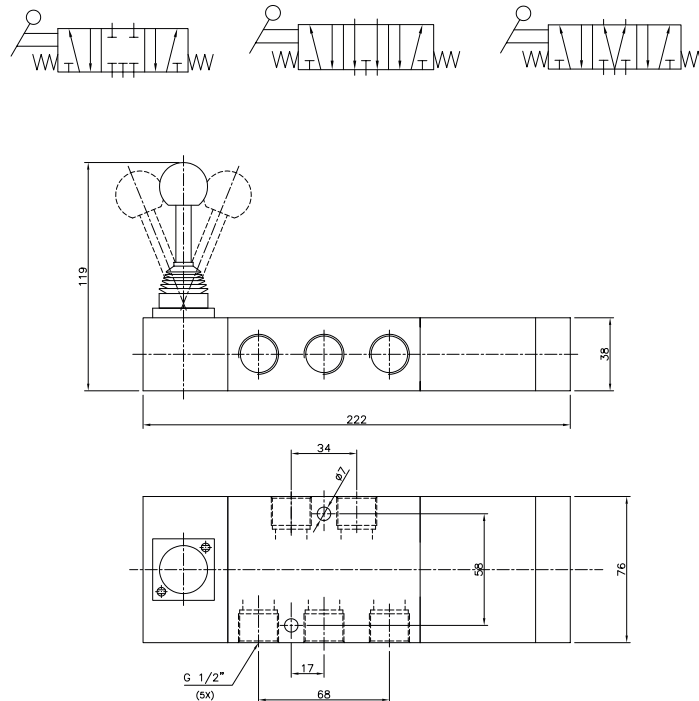
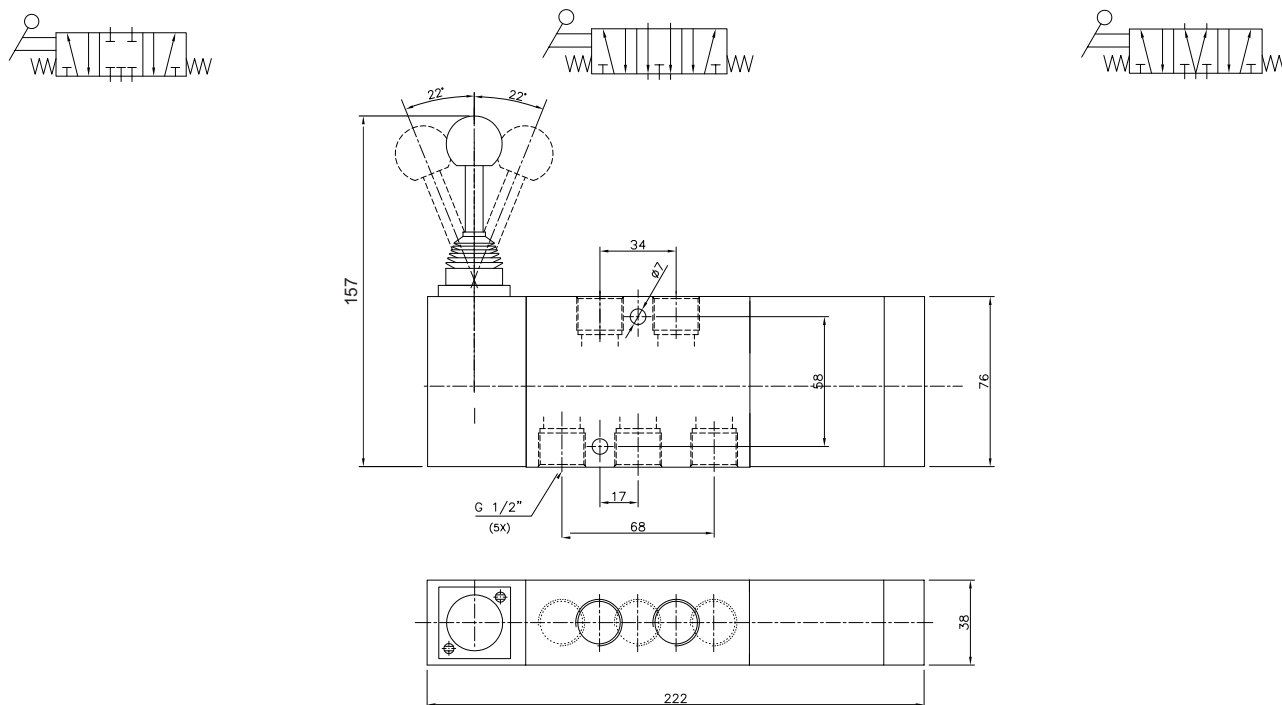


#### VP125271/VP125272/VP125275



## Série VP12 G 1/2" Muscular

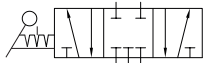
### DIMENSIONAL

**VP125322F**
**VP125322N**
**VP125322P**

**VP125372F**
**VP125372N**
**VP125372P**

**VP1253C2F**
**VP1253C2N**
**VP1253C2P**


## Série VP12 G 1/2" Muscular

### DIMENSIONAL

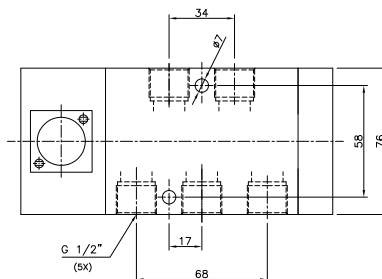
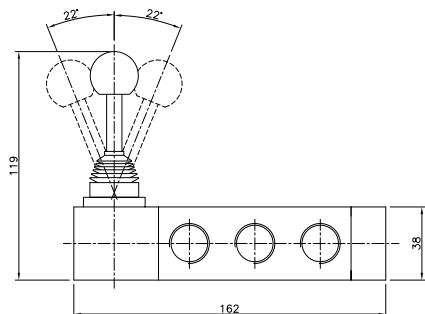
#### VP125375F



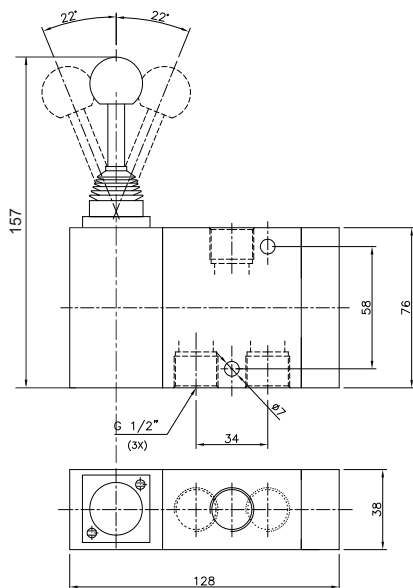
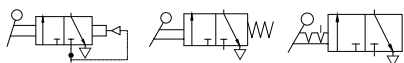
#### VP125375N



#### VP125375P



#### VP1232C1/VP1232C2/VP1232C5



#### VP1252C1/VP1252C2/VP1252C5

